



## 621/622 SERIES

- Vacuum and compound ranges through 0 psig to 15,000 psig; absolute ranges from 0 psia to 15 psia through 0 psia to 100 psia
- Current and voltage outputs available
- 316 stainless steel and Elgiloy wetted parts
- Factory Mutual and Canadian Standards Association approved
- CE compliant to suppress RFI, EMI and ESD
- NACE MR0175/ISO 15156 compliant
- NSI/ISA-12.27.01-2003 approved single seal

### APPLICATIONS

- Chemical processing
- Gas pressure measurement
- Oil field & offshore
- Mining
- Well head measurement

NOSHOK 621 and 622 Series transmitters are Factory Mutual and Canadian Standards Association approved for use in hazardous location applications as follows:  
 Explosion-proof with entity approval for: Class I, Division 1, Groups A, B, C and D. Dust Ignition-proof with entity approval for class II/III, Division 1, Groups E, F and G. Maximum electrical ratings 30V, 20 mA.  
 CE compliant with pressure equipment directive 97/23EC.  
 ANSI/ISA-12.27.01-2003, Approved single seal.

### SPECIFICATIONS

Output signals	4 mA to 20 mA, 2-wire; 1 Vdc to 5 Vdc, 3-wire; 0.5 Vdc to 4.5 Vdc, 3-wire	
Pressure ranges	Vacuum through 0 psi to 15,000 psi Absolute from 0 psia to 15 psia through 0 psia to 100 psia	
Accuracy	±0.25% full scale (BFSL) (Includes the effects of non-linearity, hysteresis, non-repeatability, zero point and full scale errors)	
Stability	≤±0.2% full scale for 1 year, non-accumulating	
Response time	≤1 ms (between 10% and 90% full scale)	
Pressure cycle limit	150 Hz	
Durability	>100,000,000 full scale cycles	
Temperature ranges	Compensated	32 °F to 176 °F (0 °C to 80 °C)
	Zero effect	±0.011% full scale/ °F
	Span effect	±0.011% full scale/ °F
	Media	T6: -40 °F to 131 °F (-40 °C to 55 °C) T5: -40 °F to 158 °F (-40 °C to 70 °C) T4: -40 °F to 212 °F (-40 °C to 100 °C)
	Ambient	T6: -40 °F to 140 °F (-40 °C to 60 °C) T5: -40 °F to 167 °F (-40 °C to 75 °C) T4: -40 °F to 221 °F (-40 °C to 105 °C)
Storage	-40 °F to 221 °F (-40 °C to 105 °C)	
Power requirement*	10 Vdc to 30 Vdc (4 mA to 20 mA, 2-wire)	
	6 Vdc to 30 Vdc (1 Vdc to 5 Vdc, 3-wire; 0.5 Vdc to 4.5 Vdc, 3-wire)	
	14 Vdc to 30 Vdc (0 Vdc to 10 Vdc, 3-wire)	
Load limitations	≤ (VPower-10)/0.020 Amp for 4 mA to 20 mA ≥ 10,000 Ω for 1 Vdc to 5 Vdc, 3-wire	
Proof pressure	3 times full scale for ranges 0 psi to 15 psi through 0 psi to 200 psi 1.75 times full scale for ranges 0 psi to 300 psi through 0 psi to 10,000 psi 1.5 times full scale for 0 psi to 15,000 psi	
Burst pressure	3.8 times full scale for ranges 0 psi to 15 psi through 0 psi to 200 psi 4 times full scale for ranges 0 psi to 300 psi through 0 psi to 10,000 psi 3 times full scale for 0 psi to 15,000 psi	
Measuring element	621 Series is 316 stainless steel for ranges up through 0 psi to 300 psi, 316 stainless steel with Elgiloy ranges 0 psig to 500 psig and higher; 622 Series is 316 stainless steel with NBR o-ring; (FKM o-ring optional)	
Connection	316 stainless steel	
Housing material	316 stainless steel	
Environmental rating	IP67	
Electromagnetic rating	CE compliant to EMC norm EN 61326:1997/A1:1998 RFI, EMI and ESD protection	
Electrical protection	Reverse polarity, over-voltage and short circuit protected	
Shock	1,000 g's according to IEC 60068-2-27	
Vibration	20 g's according to IEC 60068-2-6	
Weight	Approximately 12 oz.	

\* Unregulated

ORDERING INFORMATION									
SERIES	621	Stainless steel threaded connection	622	316 Stainless steel flush diaphragm	622H	Hastelloy C flush diaphragm			
PRESSURE RANGES	30vac	-30 inHg to 0 psig	15	0 psig to 15 psig	500	0 psig to 500 psig	6000	0 psig to 6,000 psig	
	30/30	-30 inHg to 30 psig	30	0 psig to 30 psig	1000	0 psig to 1,000 psig	8000	0 psig to 8,000 psig	
	30/60	-30 inHg to 60 psig	60	0 psig to 60 psig	1500	0 psig to 1,500 psig	10000	0 psig to 10,000 psig	
	30/100	-30 inHg to 100 psig	100	0 psig to 100 psig	2000	0 psig to 2,000 psig	15000	0 psig to 15,000 psig	
	30/200	-30 inHg to 200 psig	200	0 psig to 200 psig	3000	0 psig to 3,000 psig	15A	0 psia to 15 psia	
			300	0 psig to 300 psig	5000	0 psig to 5,000 psig	100A	0 psia to 100 psia	
		psig = gauge pressure    psia = absolute pressure		Other ranges available on request		Note: 622 Series is available for pressure ranges up to 0 psig to 8,000 psig			
ACCURACY	1	±0.25% full scale (BFSL)							
OUTPUT SIGNALS	1	4 mA to 20 mA, 2-wire		3	1 Vdc to 5 Vdc, 3-wire, low power		31	0.5 Vdc to 4.5 Vdc 3-wire, low power	
	2	0 Vdc to 5 Vdc, 3-wire		5	0 Vdc to 10 Vdc, 3-wire				
PROCESS CONNECTIONS	2	1/4" NPT male		11	G 1/2 B*				
	8	1/2" NPT male		13	G 1 B (622 Series only, <30 psig)				
ELECTRICAL CONNECTIONS	6	1/2" NPT male conduit with 6' integral cable					37	1/2" NPT male conduit with 6' flying leads with epoxy seal	
OPTIONS	ST8	Threaded Orifice (621 Series only)		20	20' Cable/lead (attached to electrical connection 6 or 37)		30	30' Cable/lead (attached to electrical connection 6 or 37)	

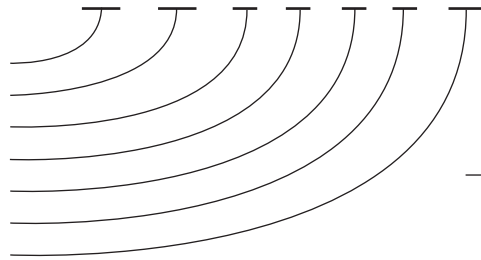
Please consult your local NOSHOK Distributor or NOSHOK, Inc. for availability and delivery information.

\* 622 Series only, G 1/2 B Flush ( $\geq 30$  psig).

### EXAMPLE

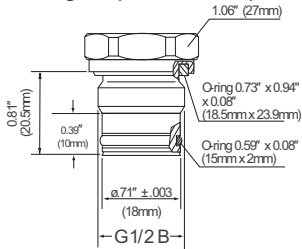
Series ..... 621 Series  
 Pressure range ..... 0 psig to 500 psig  
 Accuracy ..... ±0.25% full scale (BFSL)  
 Output signal ..... 4 mA to 20 mA, 2-wire  
 Process connection ..... 1/2" NPT Male  
 Electrical connection ..... 1/2" NPT Male conduit with 6' integral cable  
 Option ..... Threaded Orifice

621 - 500 - 1 - 1 - 8 - 6 - ST8

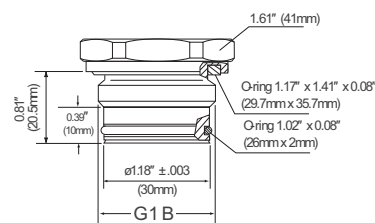


### Front flush process connections

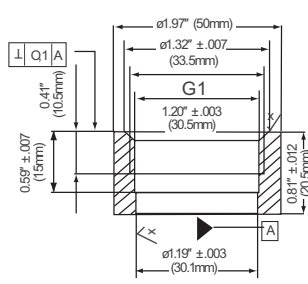
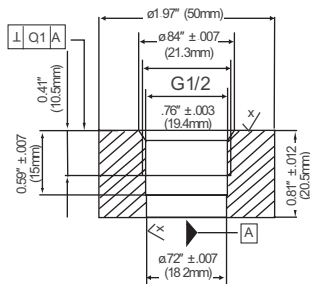
For ranges 0 psi to 30 psi through 0 psi to 8,000 psi



For ranges 0 to 30 psi and below



### Flush corresponding port weld-on adapters



### 2-WIRE WIRING

+ Supply	Red
+ Output	Black
Ground	Gray

### 3-WIRE WIRING

+ Supply	Red
Common	Black
+ Output	Brown
Ground	Gray